


 14,9%



NATURAL
REFRIGERANT
R290

Key Features

The FM-17oEE-HC and FM-17oEE-HCN are self-contained ice makers, which utilise Natural Refrigerant R290.

-  Energy efficient, with savings of 14.9% compared to HFC equivalent model.*
- ✓ Produces either Flake or Nugget (-HCN) ice.
- ✓ Members of the Emerald Class, Hoshizaki's new range of climate friendly ice makers.
- ✓ Can produce up to 165 kg (flake) and 145kg (nugget) of ice per 24 hours respectively (AT.10°C.WT.10°C).
- ✓ Flake ice applications: food processing, fish and fresh produce display, organ transportation in medical arena.
- ✓ Nugget ice applications: packaged produce display (bottled beverages and food) and as key ingredient in beverages.
- ✓ Efficient ice making process due to Hoshizaki's unique FM auger system. Utilises all water brought into the machine; therefore water consumption is equal to ice production.
- ✓ Auger is made of double hardened stainless steel. Combined with carbon bearings, they work optimally in a tough and wet environment. Benefits include: longer product life expectancy and reduced maintenance costs.
- ✓ Electronically controlled to ensure an optimised ice making process under varying circumstances without the need for physical adjustments. Quality of ice is always consistent.
- ✓ Main characteristic of Hoshizaki's Flake ice is that 'freeze- burn' is prevented when displaying fresh fish or produce.

* Based on Internal comparative study. Please contact your local sales branch to find out more.



FM-17oEE-HC
Ice: Flake



FM-17oEE-HCN
Ice: Nugget

Available Models

Model	Air Cooled	Water Cooled
FM-17oEE-HC	✓	
FM-17oEE-HCN	✓	

Bins

Model	Type of Bin	Max. Bin Capacity approx.
FM-17oEE-HC	Self-contained	26kg
FM-17oEE-HCN	Self-contained	32kg

Production

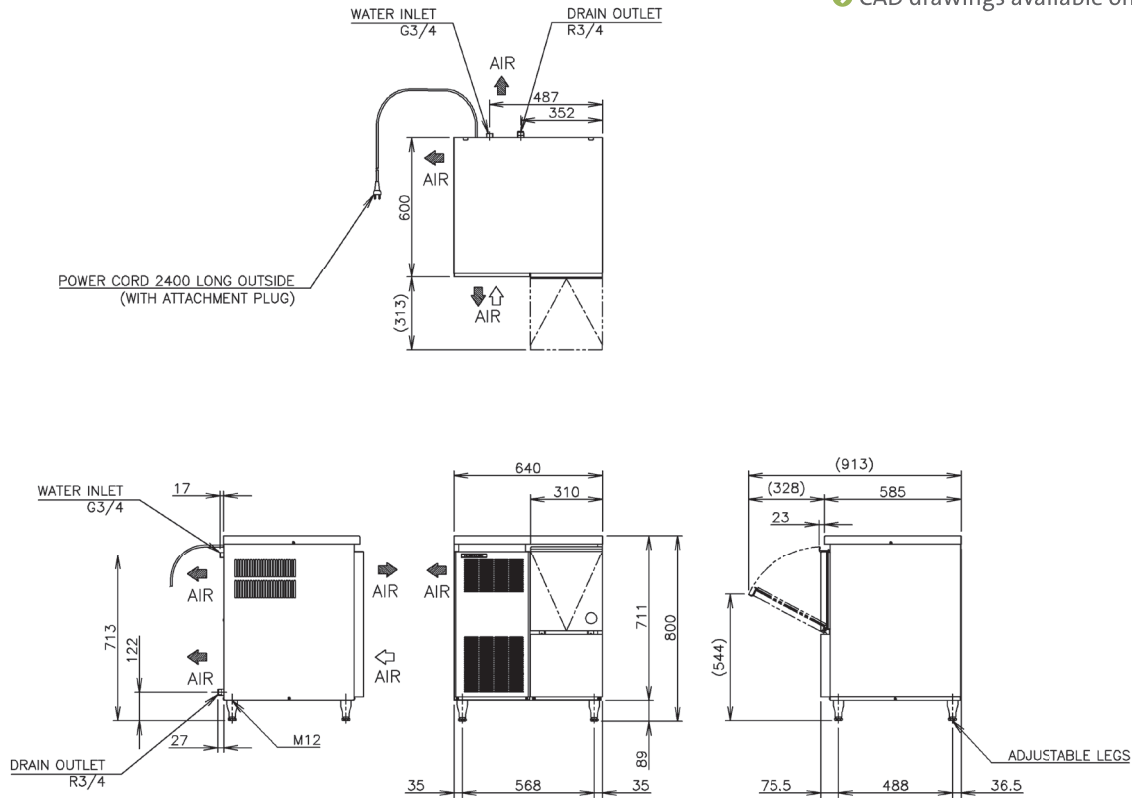
Model	Ice Production per 24h approx.	Temperature	Water Consumption per 24h approx.
FM-17oEE-HC	165kg	AT.10°C, WT.10°C	0,165m ³
	135kg	AT.21°C, WT.15°C	0,135m ³
	100kg	AT.32°C, WT.21°C	0,100m ³
FM-17oEE-HCN	145kg	AT.10°C, WT.10°C	0,145m ³
	120kg	AT.21°C, WT.15°C	0,120m ³
	90kg	AT.32°C, WT.21°C	0,090m ³

For more information visit our website at www.hoshizaki-europe.com

Hoshizaki Europe B.V. retains the right to change products and their specifications without prior notice.



➔ CAD drawings available on our website



D06565 / 2010.04.20

Specifications

	FM-17oEE-HC	FM-17oEE-HCN
Dimensions W x D x H (mm)	640mm x 600mm x 800 (798-833) mm	640mm x 600mm x 800 (798-833) mm
AC Supply Voltage	1/220-240V 50Hz	1/220-240V 50Hz
Electric Consumption (AT.32°C, WT.21°C)	495W	500W
Heat Rejection (AT.32°C, WT.21°C)	1240W	1240W
Refrigerant Charge	R290	R290
Isolation	Polyurethane	Polyurethane
Weight Gross / Net	82 kg / 71 kg	82 kg / 71 kg

Operation Requirements

Ambient Temperature	5 - 40°C
Water Supply Temperature	5 - 35°C
Water Supply Pressure	0,05-0,8MPa (0,5-8bar)
Voltage Range	Rated Voltage ± 6%

Accessories

Scoop
Installation Kit